



QLight User Guide For Android

Q Station Firmware: r291 and above

(Support Android Version: 4.2 and above)

2015-01-08

Bellnet Technologies Co., Ltd., any modification of this product will not issue a separate notice.

All Rights Reserved.

CONTENT

1	INTRODUCTION	3
1.1	VERIFY KIT CONTENTS	3
1.2	CONNECTION	4
2	CONFIGURATION	7
2.1	ENTER CONFIGURATION PAGE	7
2.2	CONFIGURATION IN DETAIL	8
2.2.1	<i>Music Service.....</i>	<i>8</i>
2.2.2	<i>Basic Settings</i>	<i>11</i>
2.2.3	<i>Internet Connection.....</i>	<i>17</i>
2.2.4	<i>Upgrade Firmware</i>	<i>23</i>
3	QLIGHT IN ANDROID.....	31
3.1	CONNECT YOUR WI-FI TO Q STATION.....	31
3.2	INSTALL QLIGHT	31
3.3	LIGHT CONTROL.....	32
4	PLAY MUSIC & LIGHT SHOW	35

1 Introduction

Q Station (MB8800) is a product that can make the Q Bulbs blinking synchronously with the rhythm of your music which is in your mobile. Just install the application called “**QLight**” in your mobile. Then you can control the music play, the color of the Q Bulbs by your mobile.

1.1 Verify Kit Contents

Q Station kit includes the following components. *(Figure 1-1)*

1. Q Station
2. Three Q Bulbs
3. LAN cable
4. Audio Cable
5. Power Adapter
6. QIG (Quick Installation Guide)

Figure 1-1 Q Station Package Contents



1.2 Connection

Make sure the device and the cables are connected correctly. (Figure 1-2)

1. Plug in Power Adapter to Q Station.
2. Connect the Q Station to the LAN of your Home Router with LAN cable (optional).
(If you want to connect internet wirelessly, please refer to 2.2.3 Internet Connection.)
3. Connect the Audio Cable from your Q Station to the AUX of your stereo or speaker.
4. Make sure the indicator light of Q Station is blinking with red (left) and blue (right).

There're 2 indicator lights. (Figure 1-3)

a. The left indicator light shows the Q Station status.

If the left indicator light blinks with red color, it shows the Q Station is in good status.

b. The right indicator light shows the network status.

If it blinks with blue color, it shows you have not connected to internet.

If it stays blue color, no blink, it shows you have connected to internet.

5. Screw-in the Q Bulbs.

6. Match the Q Bulbs with Q Station

- a. Light up the 3 Q Bulbs.
- b. Press the Match Hole shortly with a needle. (Figure 1-3)

After about 20 seconds, the 3 Q Bulbs will blink with green color one by one.

(The Q Bulbs blink with green color shows the Q Bulbs have been matched with Q Station.)

Notice:

If any Q Bulb did not blink with green color (stay at white color), please turn off the Q Bulb. And then turn on it, press the Match Hole again. Then you will see the Q Bulb blink with green color.

7. Reset:

If you want to reset Q-station, just press the Reset Hole with a needle for about 10 seconds. (Figure 1-3)

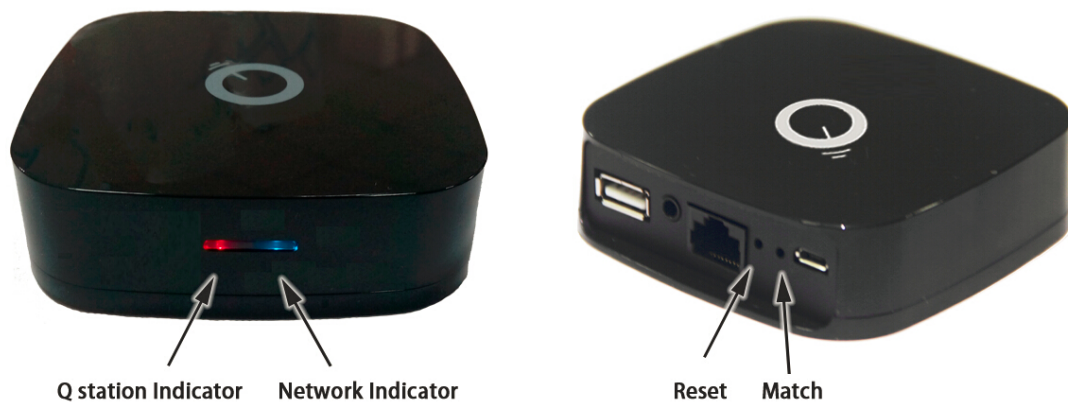
Until you see the blue light turns red color. Then loose.

Then the Q station has been reset successfully.

Figure 1-2 **Power up Q Station**



Figure 1-3 Two indicator lights and Reset, Match holes



2 Configuration

You can set the Q Station Wi-Fi related configuration in PC or mobile.
The details are as below.

2.1 Enter configuration page

1. Connect your computer's Wi-Fi to Q Station SSID. (Figure 2-1)

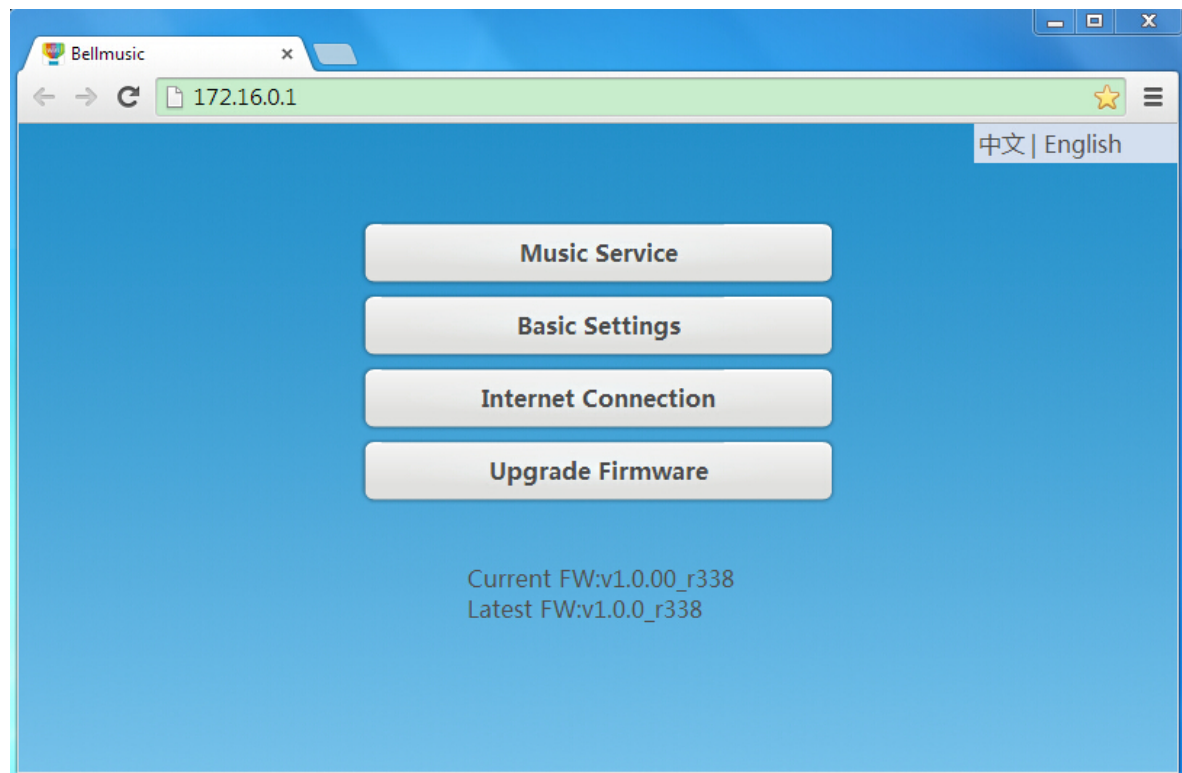
Notice: By default, Q Station SSID is "bellnetXXXXXX". No Encryption.
(XXXXXX is the last 6 digit of your MAC).

2. Open the web browser and enter "**http://172.16.0.1**" (by default).
Press Enter key, the Q station configuration home page will appear. (Figure 2-2)

Figure 2-1 **Connect your computer's Wi-Fi to Q Station SSID (e.g.bellnetA07AF2).**



Figure 2-2 **Q Station configuration home page (English)**



2.2 Configuration in detail

2.2.1 Music Service

This function controls the **speaker name** in **BellQ**.

(The **BellQ** is one application in mobile that can make the Q Bulbs synchronize with the music.)

Notice:

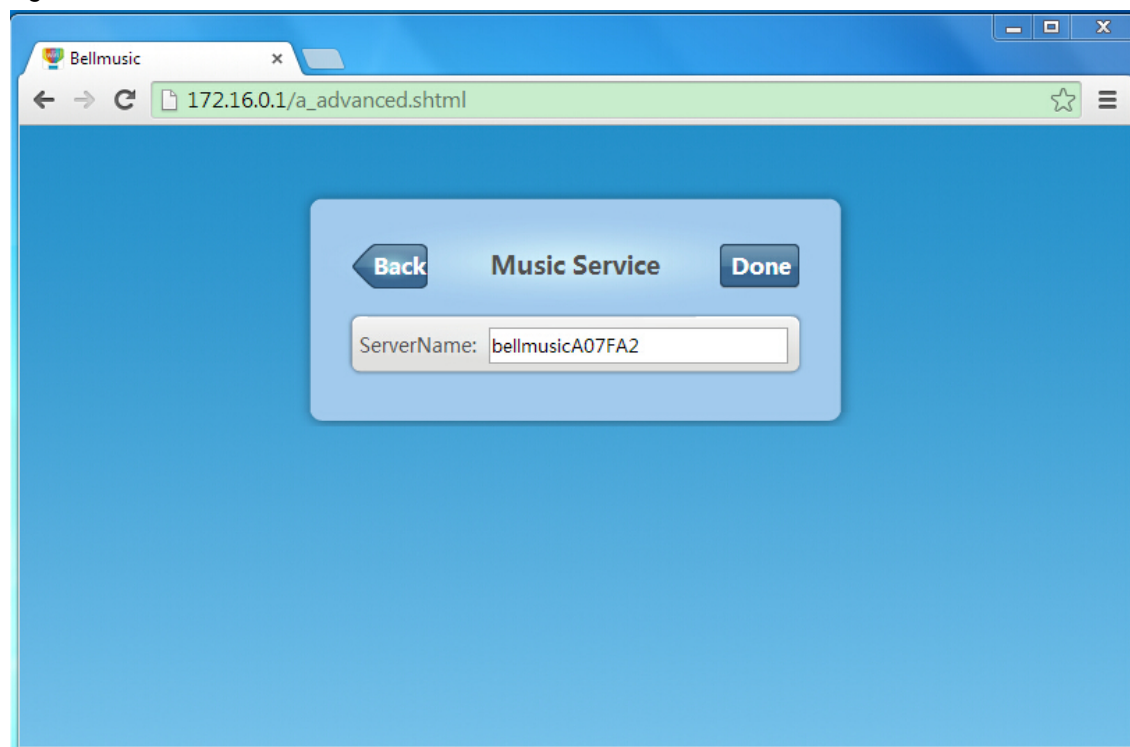
By default, Q Station Speaker Name is “**bellmusicXXXXXX**”.

(XXXXXX is the last 6 digit of your MAC)

Click “**Music Service**”, to enter the management page (Figure 2-3).

Click “**Back**”, to go back to Q Station configuration home page (Figure 2-2).

Figure 2-3 **Music Service** screen



You can change the Server Name:

1. **Input the Server Name** which you want in the field. (Figure 2-4)
2. **Click “Done”** (Figure 2-5), after **10** seconds it will pop-up a window (Figure 2-6)
3. **Click “OK”, and refresh** the page. Then the Server Name has been changed successfully. (Figure 2-7)

Figure 2-4 Input the Server Name you want in field

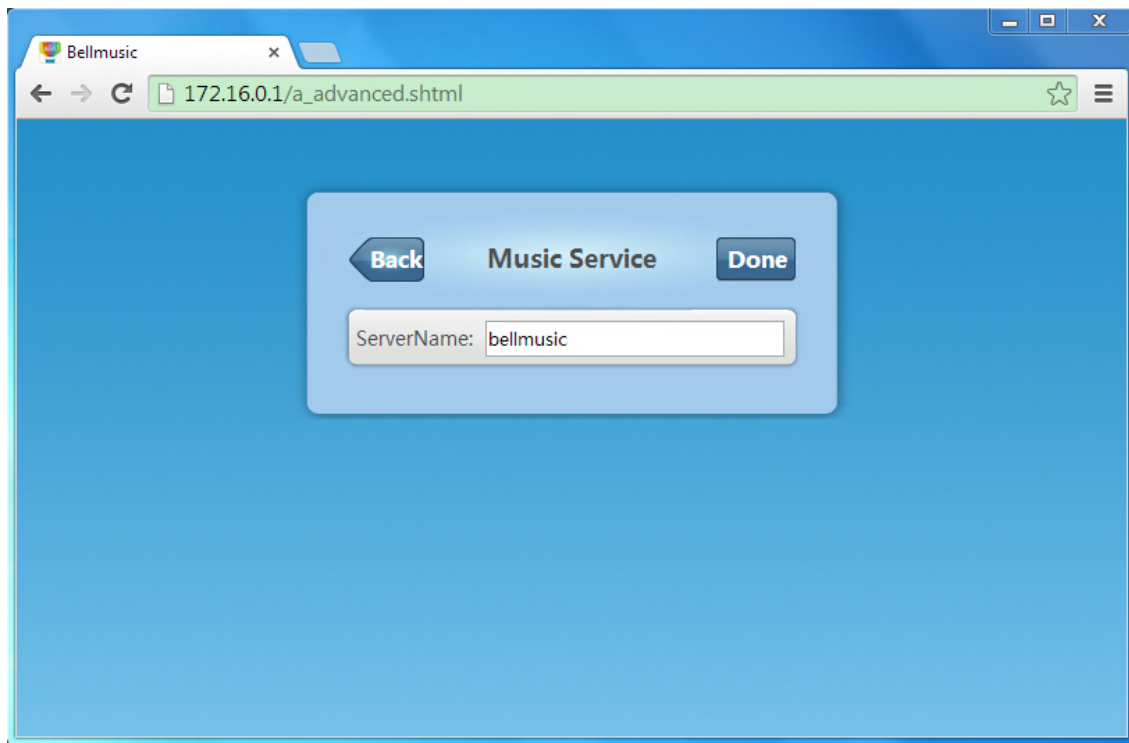


Figure 2-5 Click “Done”

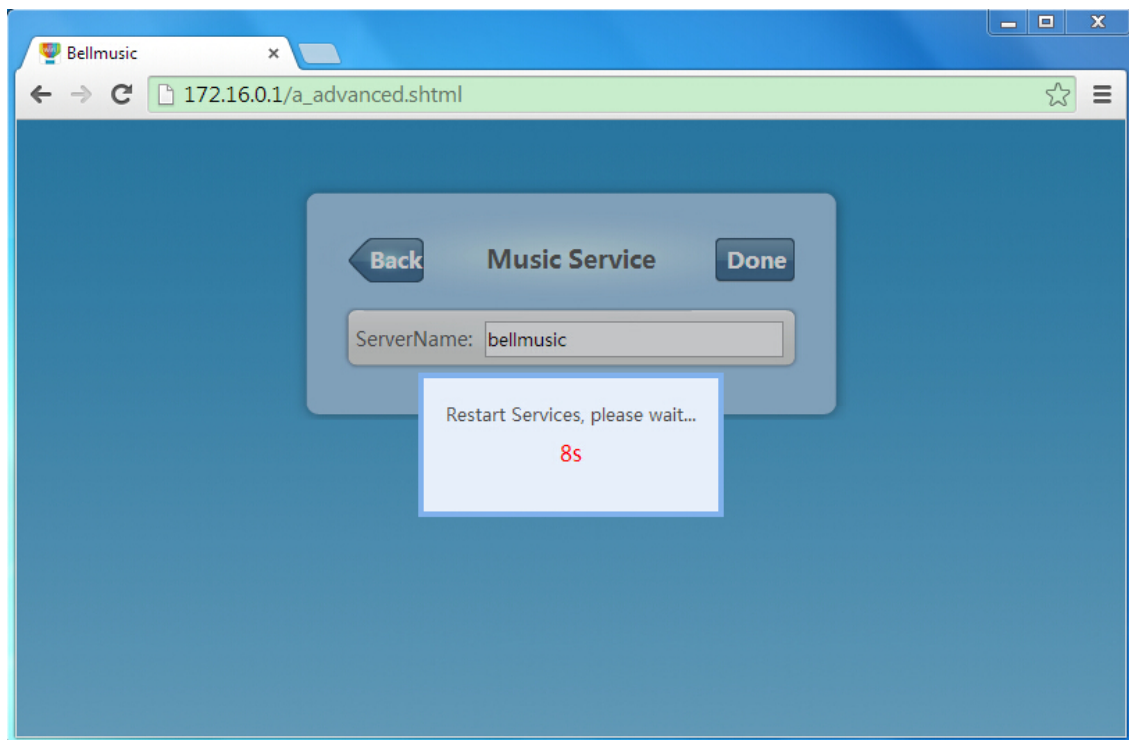


Figure 2-6 After 10 seconds, it will pop-up a window.

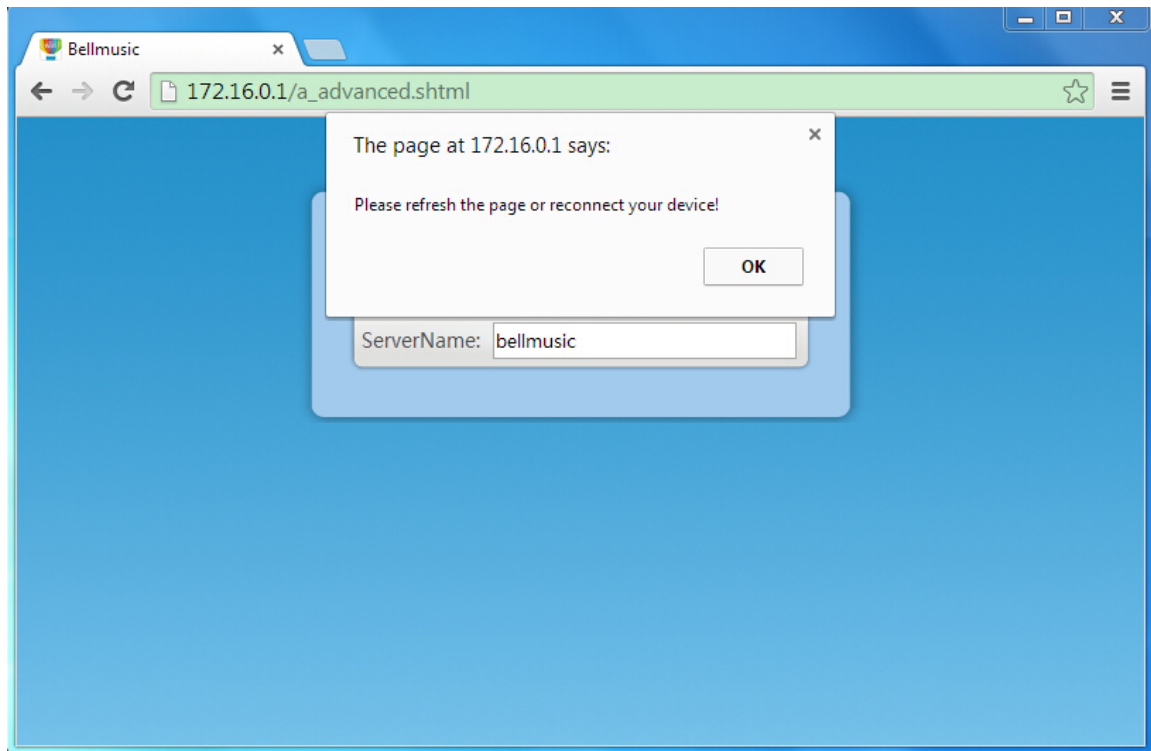
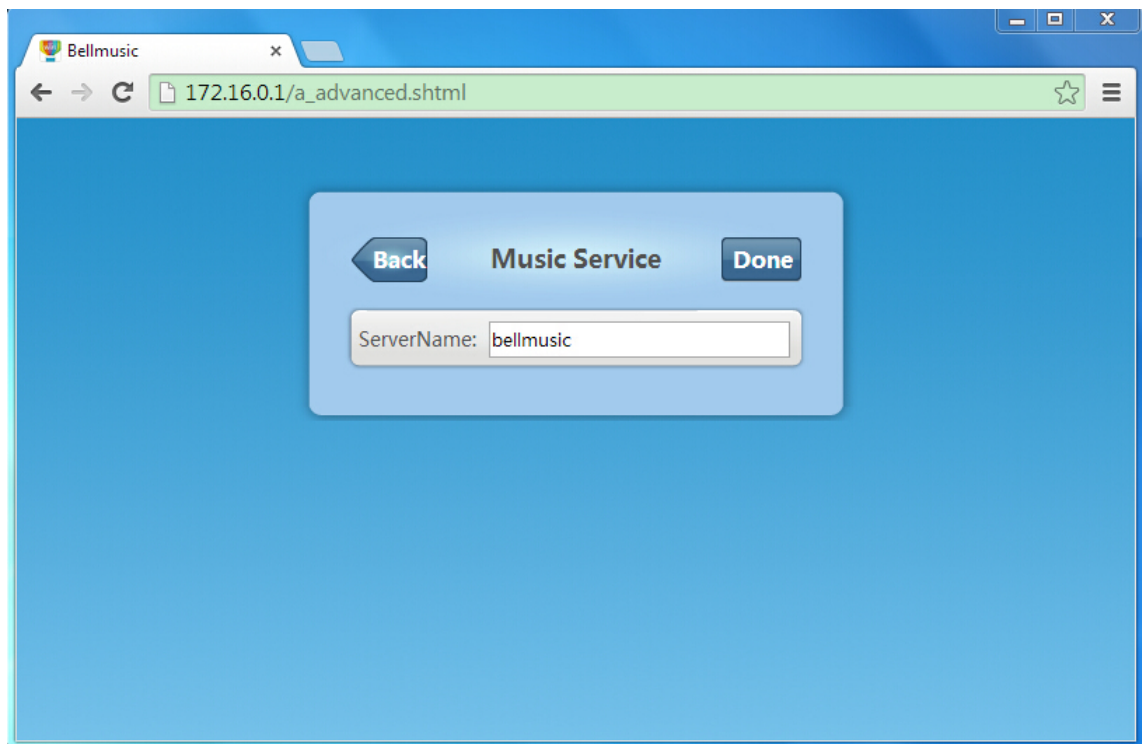


Figure 2-7 Click OK and refresh the page. Then Server Name is changed successfully.



2.2.2 Basic Settings

In this function, you can change the **Q Station Wi-Fi SSID**.

Also, you can set the encryption mode and password for the Wi-Fi.

Notice:

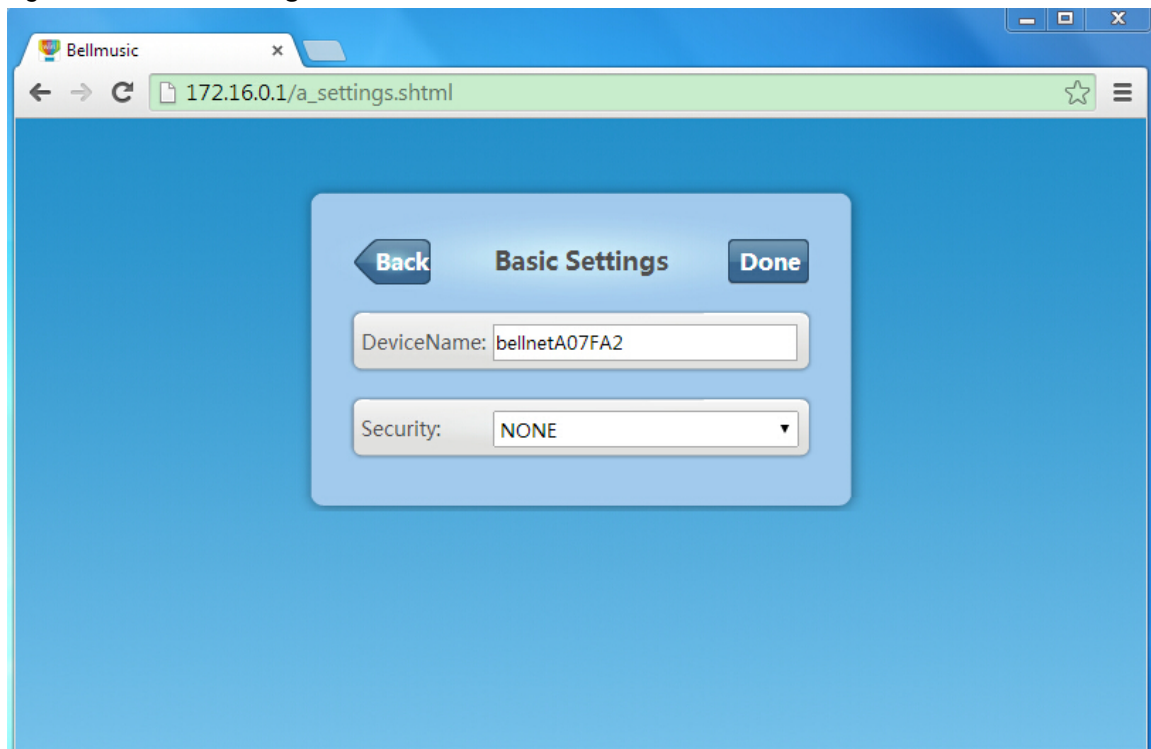
By default, Q Station SSID is “**bellnetXXXXXX**”. No Encryption.

(XXXXXX is the last 6 digit of your MAC)

Click “**Basic Settings**”, to enter the management page (Figure 2-8).

Click “**Back**”, to go back to Q Station configuration main page (Figure 2-2).

Figure 2-8 **Basic Settings** screen



Currently: The Wi-Fi SSID is bellnetA07FA2. Encryption Mode is NONE (no encryption).

You can change the Device Name (Known as Wi-Fi SSID):

1. **Input the Device Name** which you want in the field. (Figure 2-9)
2. **Click “Done”** (Figure 2-10), after **20** seconds, it will pop-up a window (Figure 2-11):
Please refresh the page or reconnect your device.
3. **Click “OK”**, then the Device Name has been changed successfully. (Figure 2-12)

Notice:

After you changed the Device Name (Q Station SSID in Wi-Fi), you need to connect to your new Q Station SSID again in Wi-Fi.

Figure 2-9 **Input the Device Name you want in field**

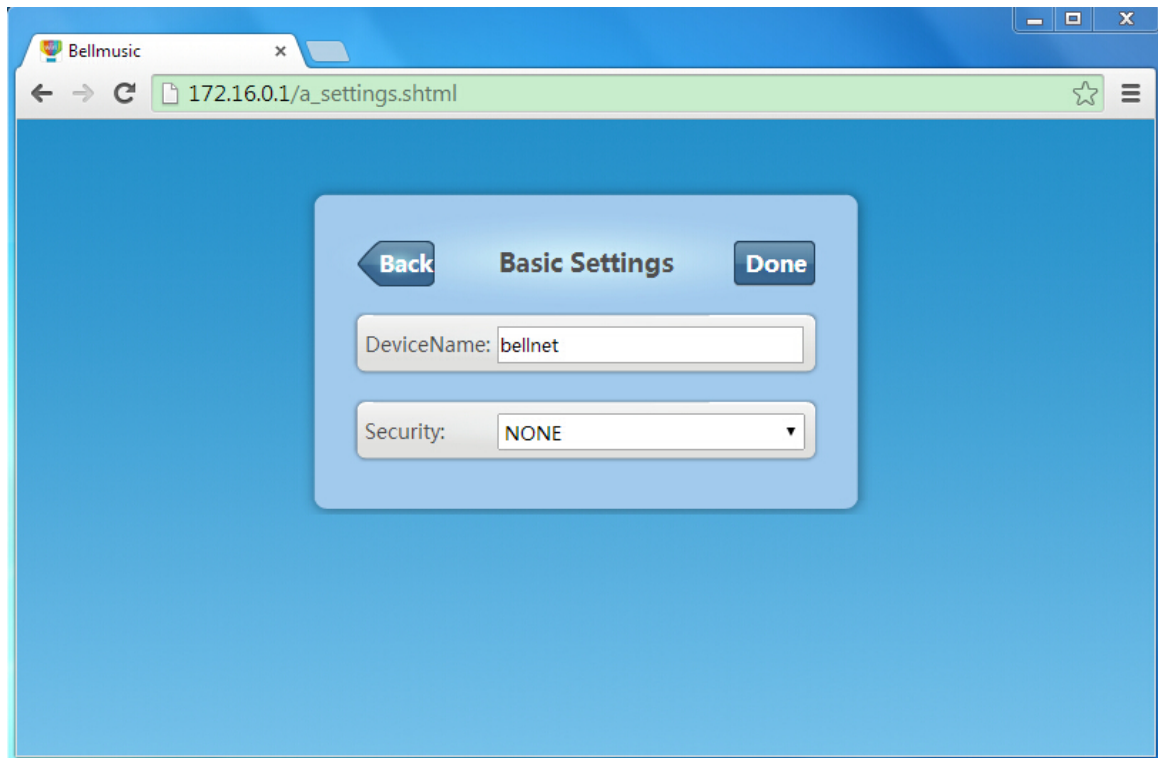


Figure 2-10 **Click “Done”**

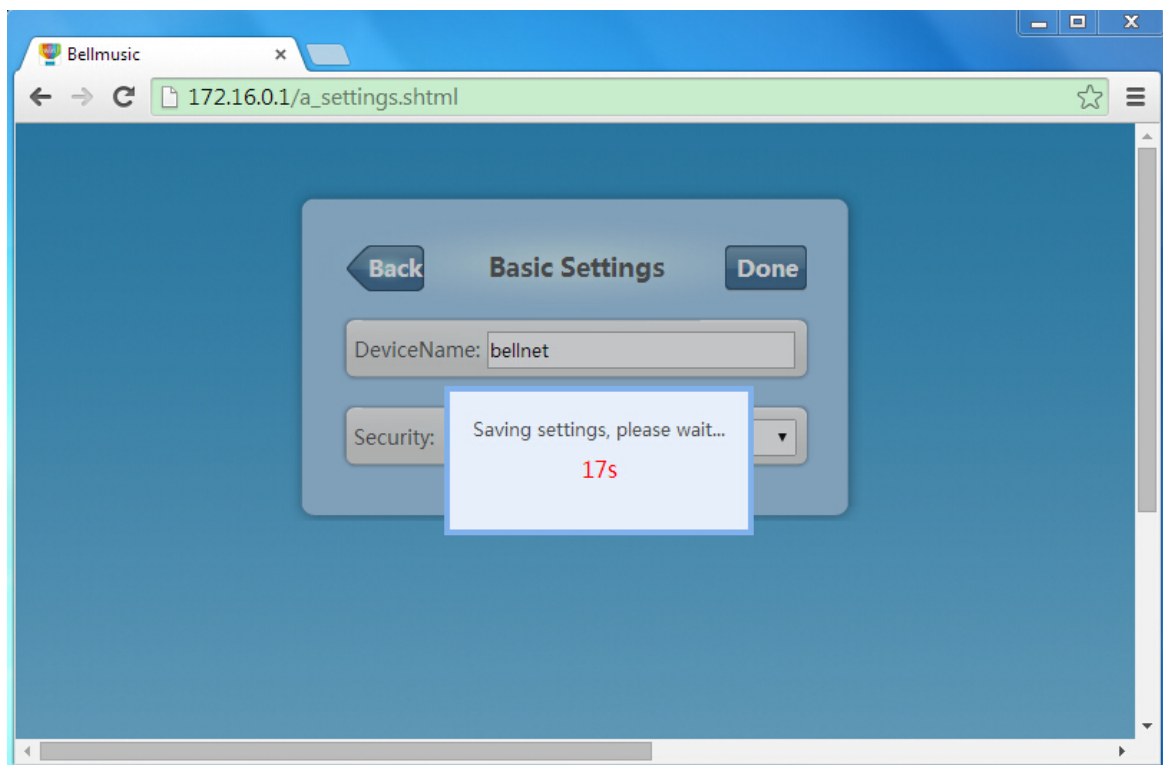


Figure 2-11 **After 20 seconds, it will pop-up a window.**

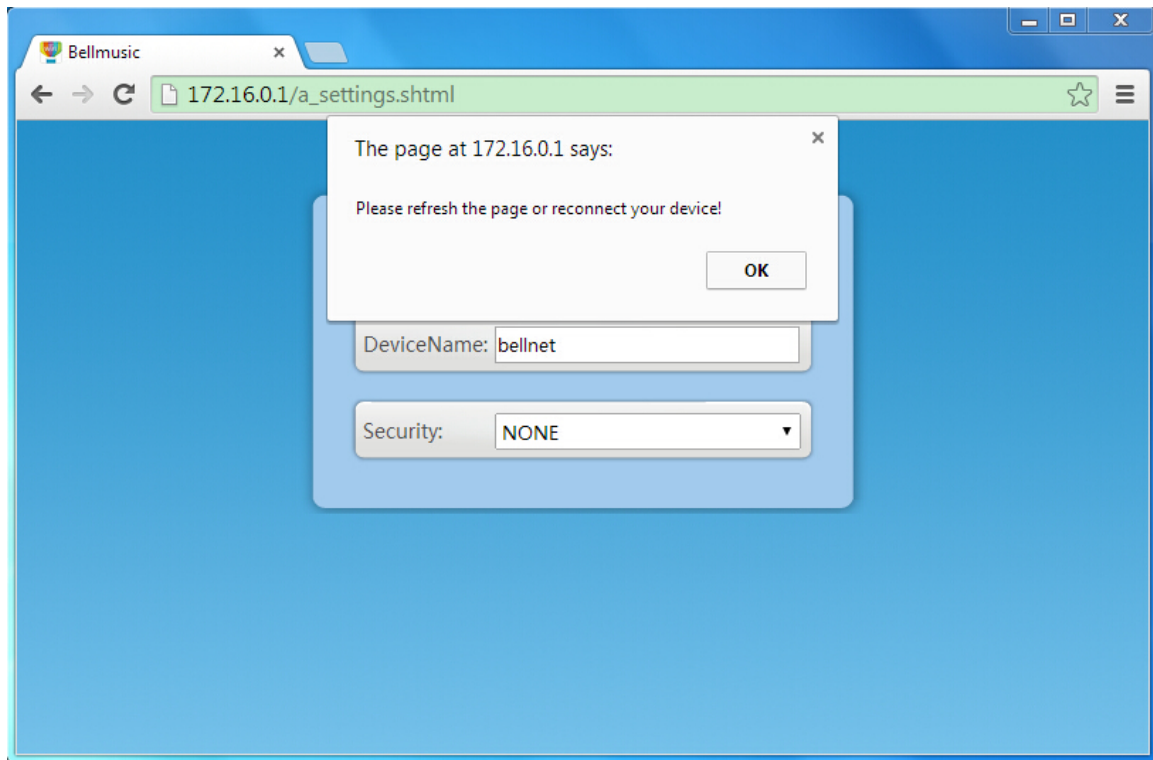
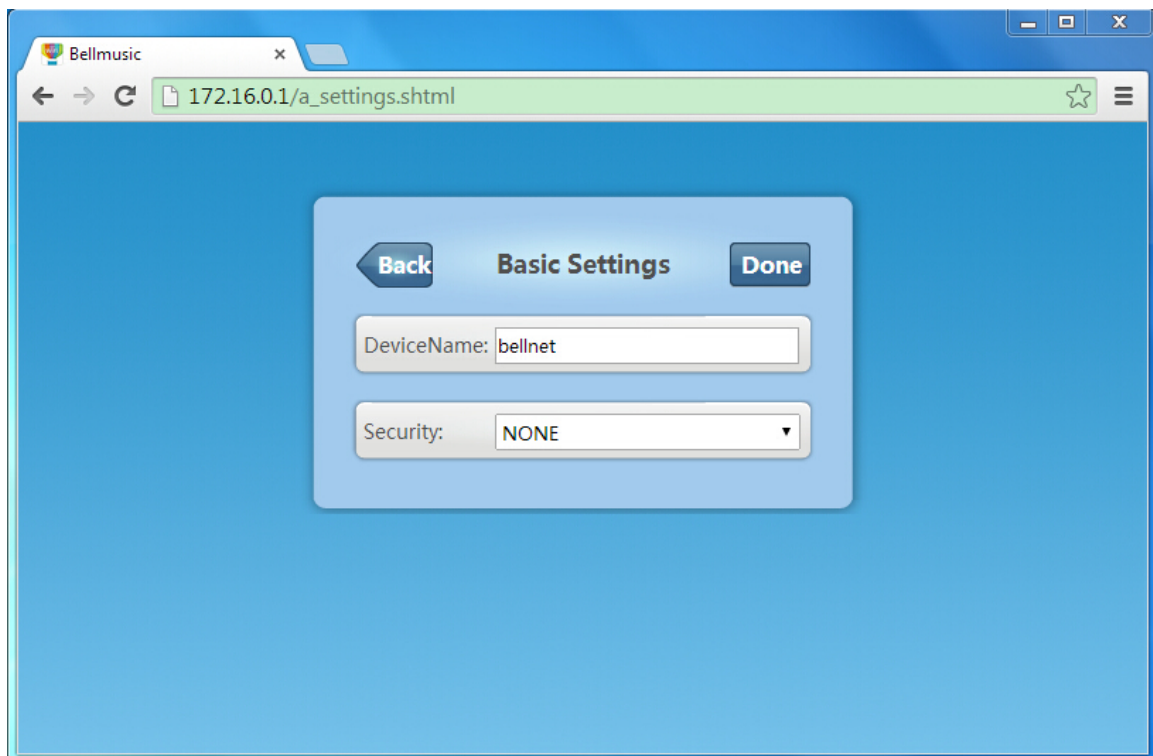


Figure 2-12 **Click OK. The Device Name is changed successfully.**



In Security drop-down list, there're 4 encryption modes: (Figure 2-13)

NONE; WPA; WPA2; WPA/WPA2.

You can change the Wi-Fi encryption mode:

1. **Choose one encryption mode** (e.g. WPA) in Security drop-down list.
2. **Input the Password, Confirm Password.** (Figure 2-14).
(Notice: password should not be less than 8 characters.)
3. **Click “Done”** (Figure 2-15), after **20** seconds, it will pop-up a window (Figure 2-16):
Please refresh the page or reconnect your device.
4. **Click “OK”**, then the security mode has been changed successfully. (Figure 2-17)

Notice:

After you changed the Wi-Fi encryption mode and password, you need to connect to Q Station again with your new password in Wi-Fi.

Figure 2-13 **There're 4 encryption modes:**

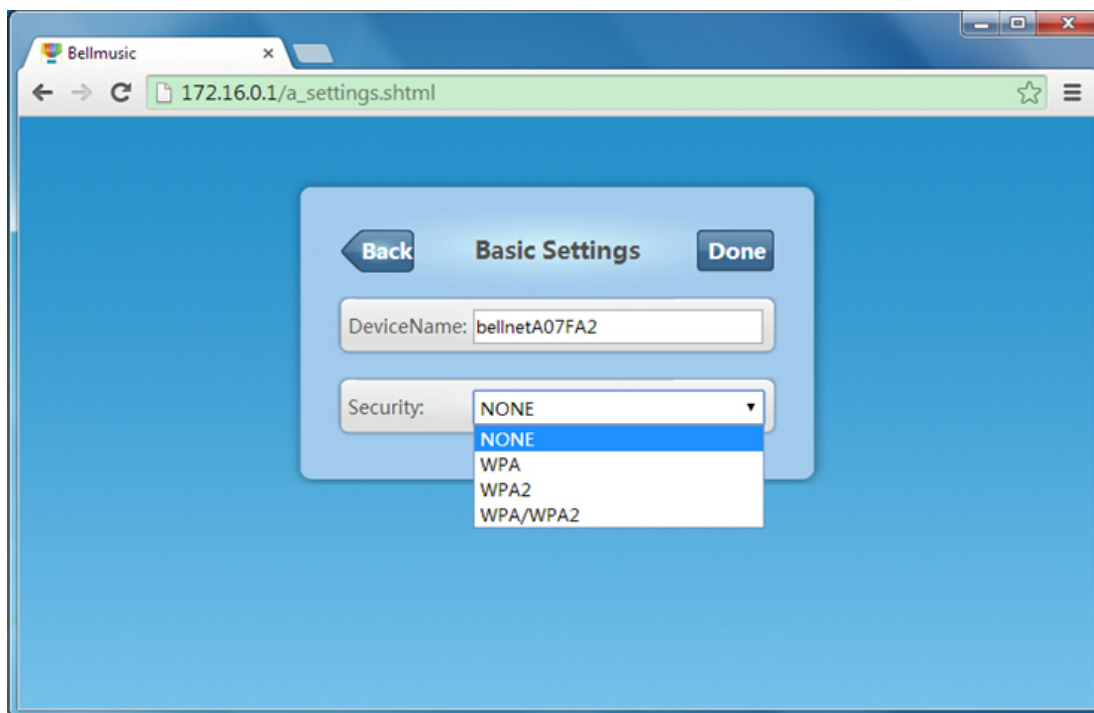


Figure 2-14 **Input the Password & Confirm Password**

The screenshot shows a web browser window with the address bar displaying "172.16.0.1/a_settings.shtml". The main content area features a "Basic Settings" form. At the top of the form are "Back" and "Done" buttons. Below them are four input fields: "DeviceName" with the value "bellnetA07FA2", "Security" with a dropdown menu showing "WPA", "Password" with masked characters (dots), and "Confirm Password" also with masked characters. The form is set against a blue gradient background.

Figure 2-15 **Click "Done"**

This screenshot shows the same "Basic Settings" form as Figure 2-14, but with a modal dialog box overlaid in the center. The dialog box has a light blue border and contains the text "Saving settings, please wait..." in black, followed by a red "17s" indicating a timeout. The form fields in the background are dimmed and partially obscured by the dialog box.

Figure 2-16 **After 20 seconds, it will pop-up a window.**

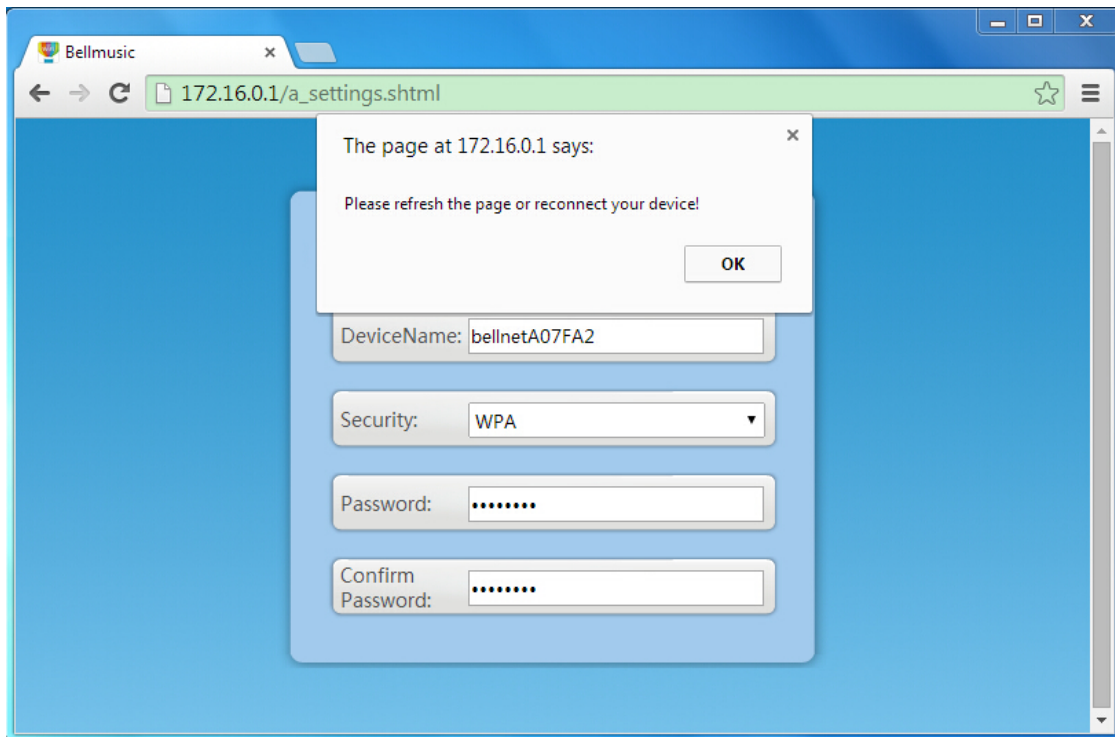
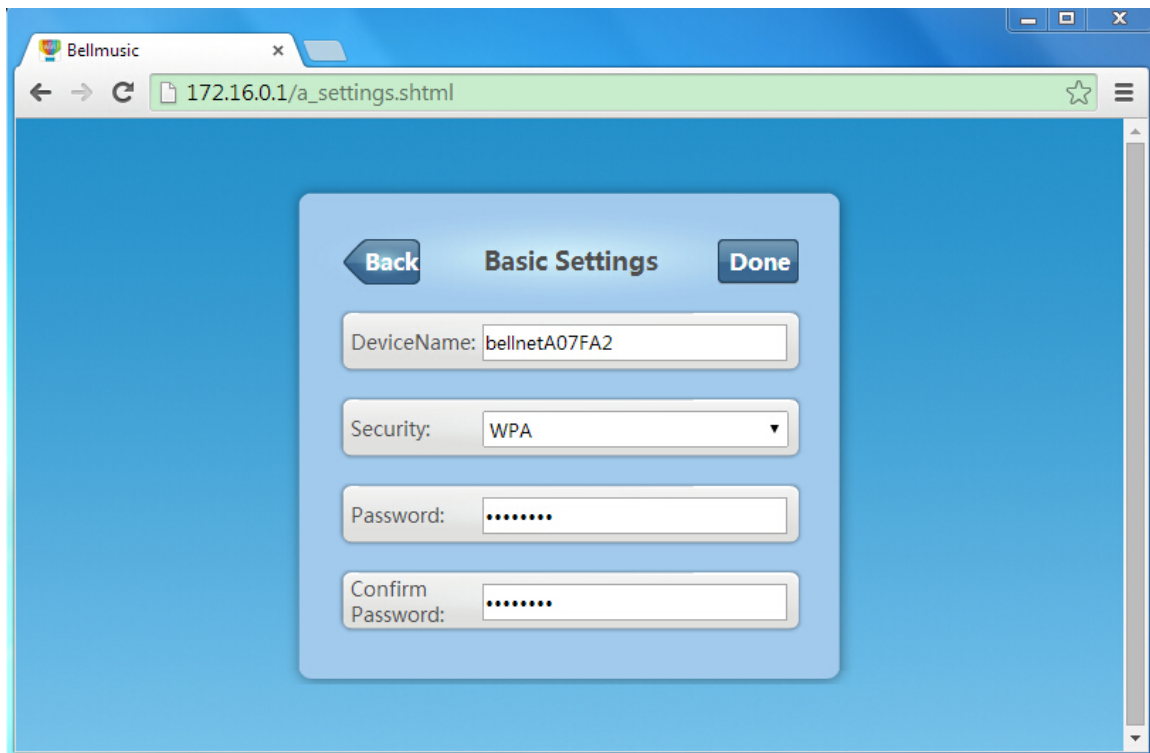


Figure 2-17 **Click OK. The security mode is changed successfully.**



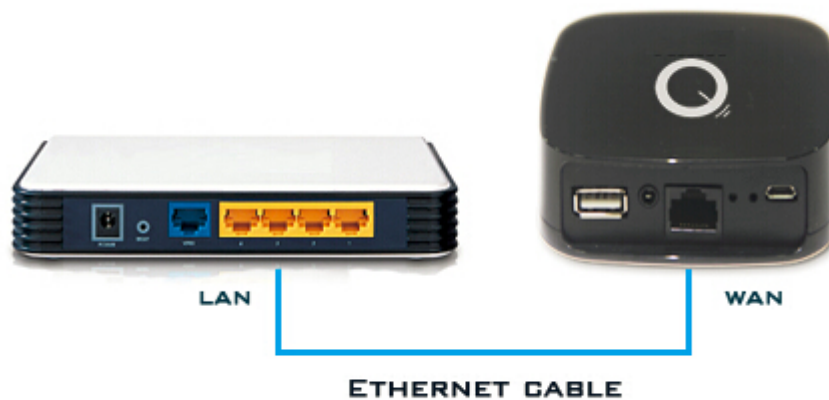
2.2.3 Internet Connection

There're 2 ways to **make your Q Station connect to internet**.
We suggest you to choose Wired Mode, as it is more stable.

1. Wired Mode.

Just connect Q Station (WAN interface) with your home router (LAN interface), using Ethernet cable. *(Figure 2-18)*

Figure 2-18 Connect Q Station (WAN) with home router (LAN)



2. Wireless Mode.

Click “**Internet Connection**”, to enter the screen. *(Figure 2-19)*

Notice:

- By default, the wireless access is **ON**.
You can click **OFF** to close wireless access.
- The page needs some time to search the nearby Wi-Fi SSIDs.
After a few seconds, it will display the nearby Wi-Fi SSIDs. *(Figure 2-20)*

Connect to the nearby Wi-Fi SSID:

- a. **Click the SSID** which you want to connect to (e.g. BellTest).
Then it will **pop-up a window** to let you input the password for the SSID.
(Figure 2-21)
- b. **Input the password** of the SSID, then **click “OK”** *(Figure 2-22)*.
(If you don’t want to connect, then click “Cancel”.)
- c. After **25** seconds *(Figure 2-23)*, it will scan the SSIDs again *(Figure 2-24)*.
- d. After a few seconds, it displays all the nearby SSIDs again.
You’ll see “**BellTest**” has been connected *(Figure 2-25)*.

Notice:

Once it is successfully connected to internet, the right indicator light should be a steady blue color. Otherwise it will be blinking.

Figure 2-19 **Scanning the nearby Wi-Fi SSIDs**

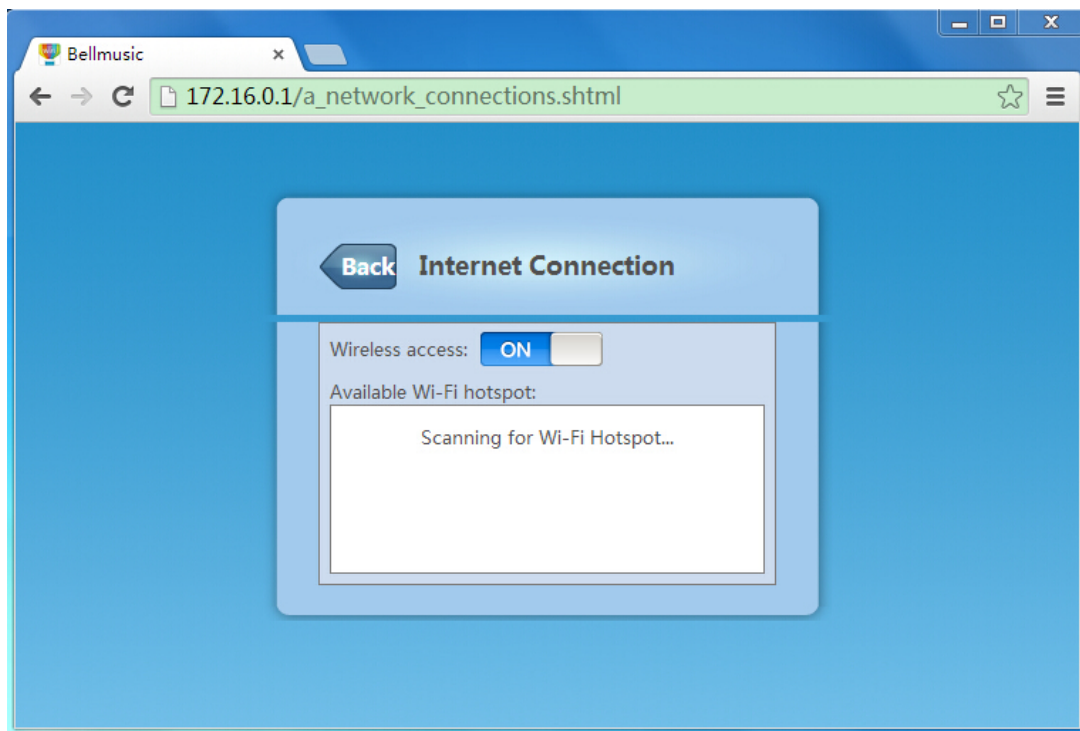


Figure 2-20 **The nearby Wi-Fi SSIDs**

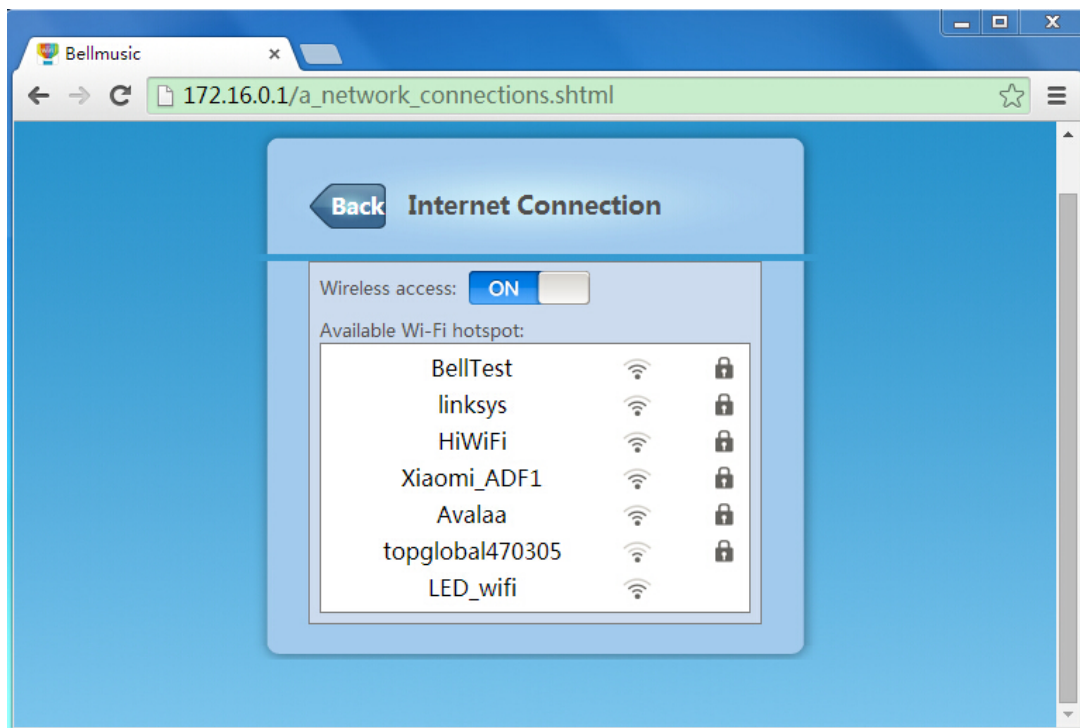


Figure 2-21 Click “BellTest”, it will pop-up a window.



Figure 2-22 Input the Wi-Fi password of “BellTest”

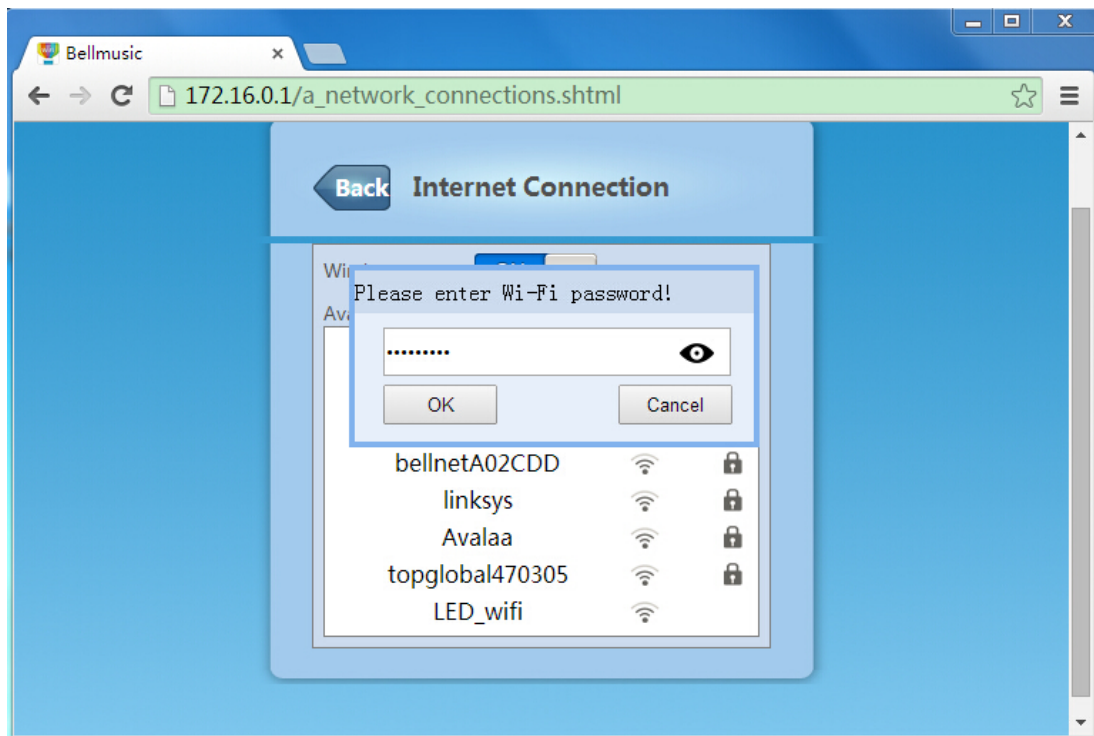


Figure 2-23 **Wait for 25 seconds**

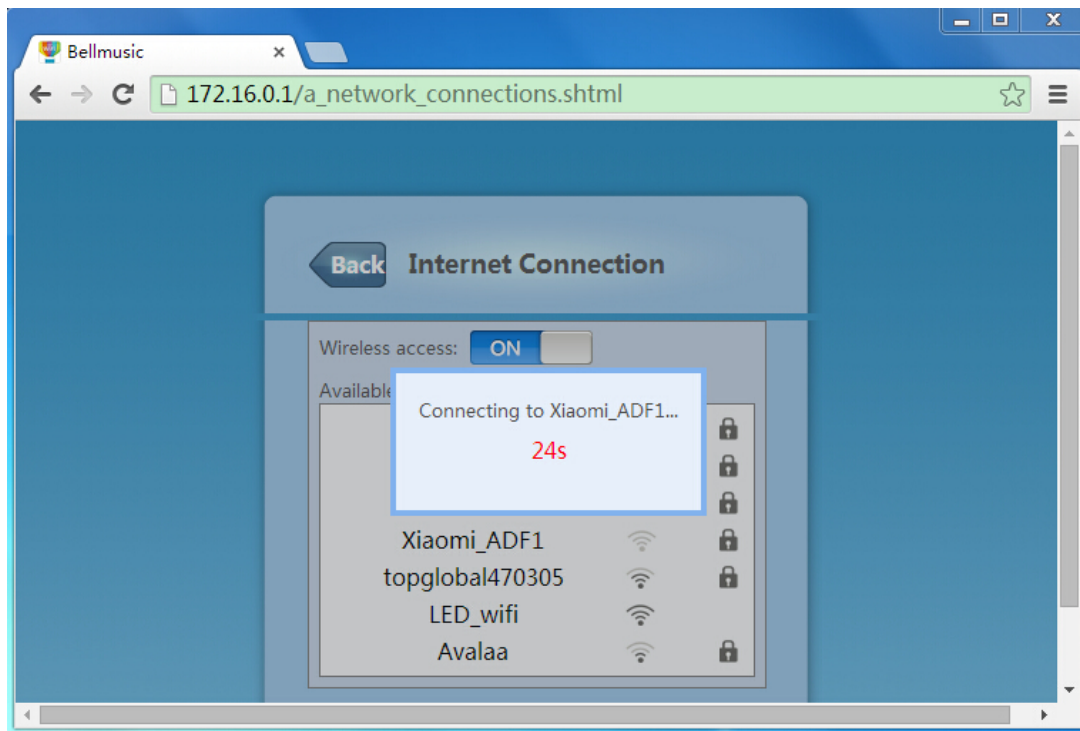


Figure 2-24 **Scanning for nearby Wi-Fi SSIDs again.**

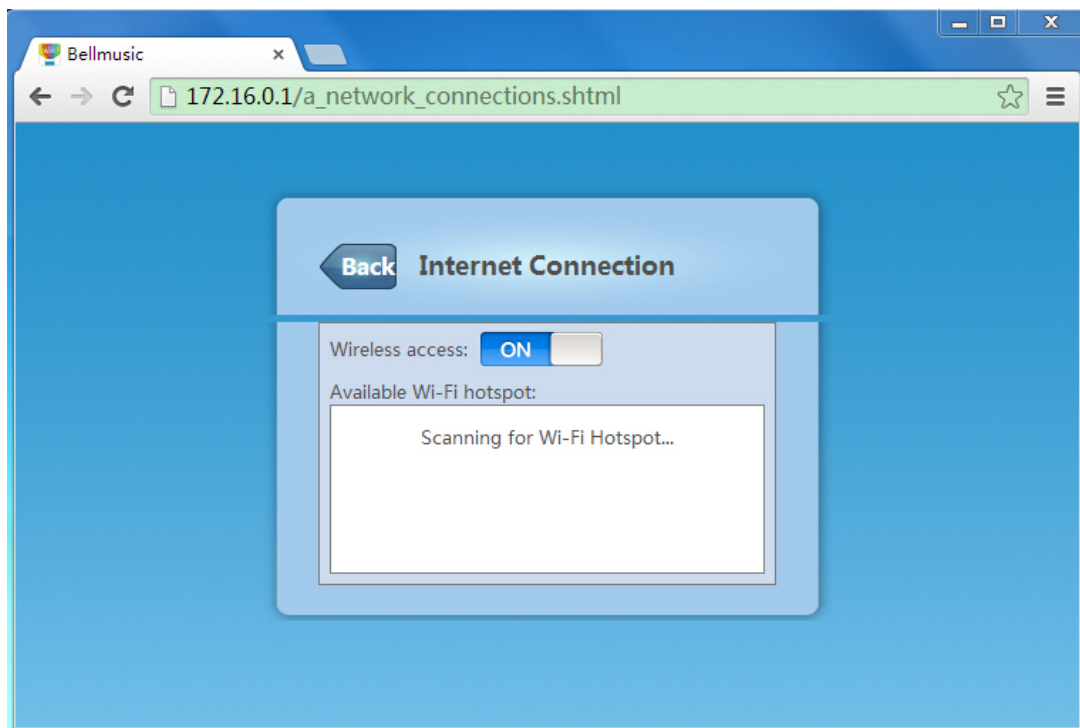
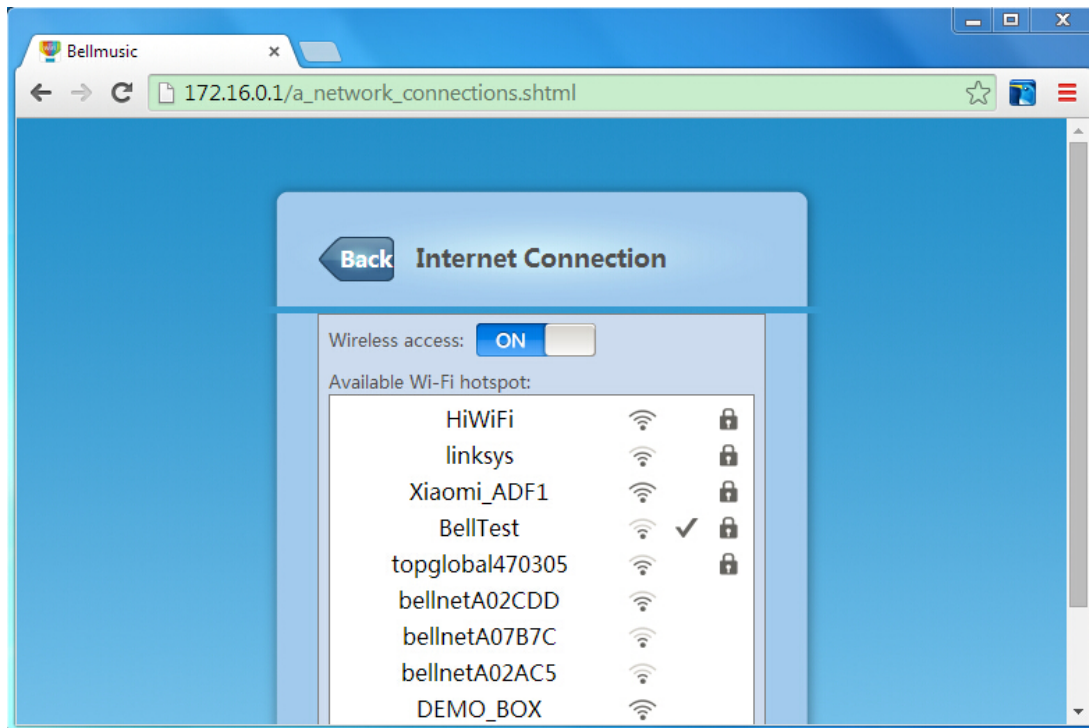


Figure 2-25 *After a few seconds, Q Station displays all the nearby SSIDs again. Then you'll see BellTest has been connected successfully.*



2.2.4 Upgrade Firmware

You can upgrade the Q Station's firmware in this function:

Click "Upgrade Firmware", to enter the screen (*Figure 2-26*).

(If you don't want to upgrade firmware, you can click "Back" to go back to configuration main page.)

There're 2 ways to upgrade firmware:

- Upgrade by yourself
- Auto Upgrade

Notice:

- If you upgrade firmware by PC, support above 2 ways of upgrade.
- If you upgrade firmware by mobile, only support Auto Upgrade.

To upgrade by yourself, please follow below steps:

1. **Click "Browse"**.

It will pop-up a window to let you select the firmware file in PC.

Choose the firmware file which you want to upgrade. (*Figure 2-27*)

2. **Click "Open"**, you can see the selected firmware file on page. (*Figure 2-28*)

3. **Click "Upgrade Firmware"**.

It will pop-up a window: File uploaded success! Continue to upgrade? (*Figure 2-29*).

4. **Click "OK"**, to proceed the upgrading. (*Figure 2-30*).

If you want to quit the upgrading, click Cancel.

5. When the process is 100%, **refresh** the page. (*Figure 2-31*).

The new firmware has been upgraded successfully.

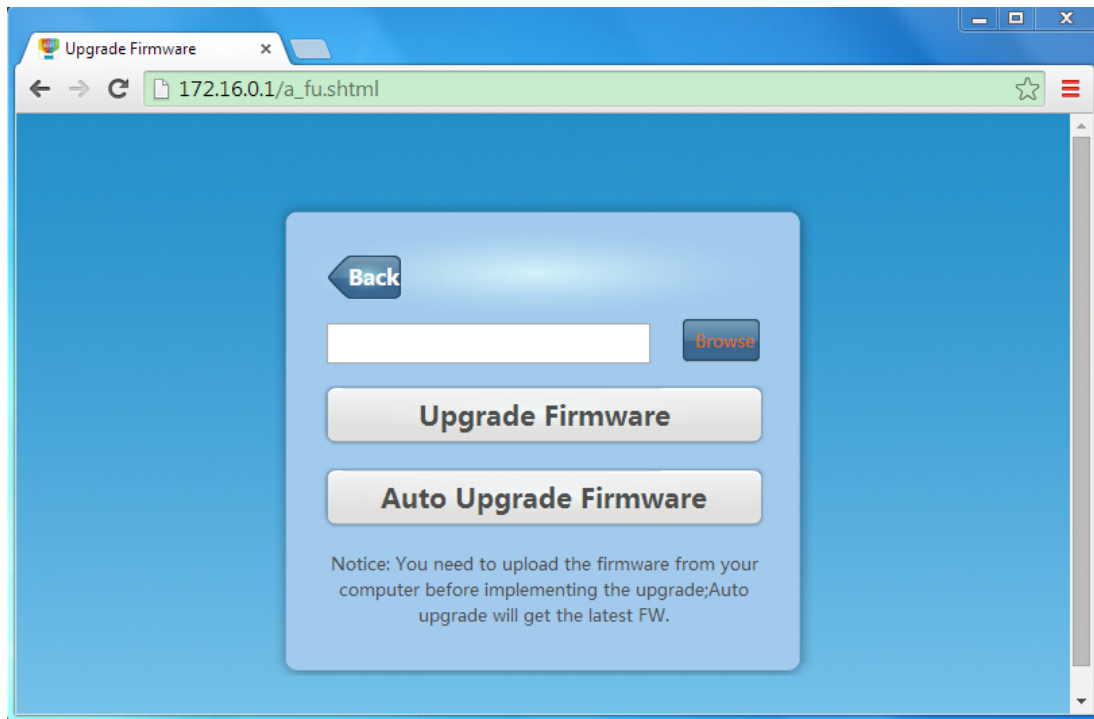
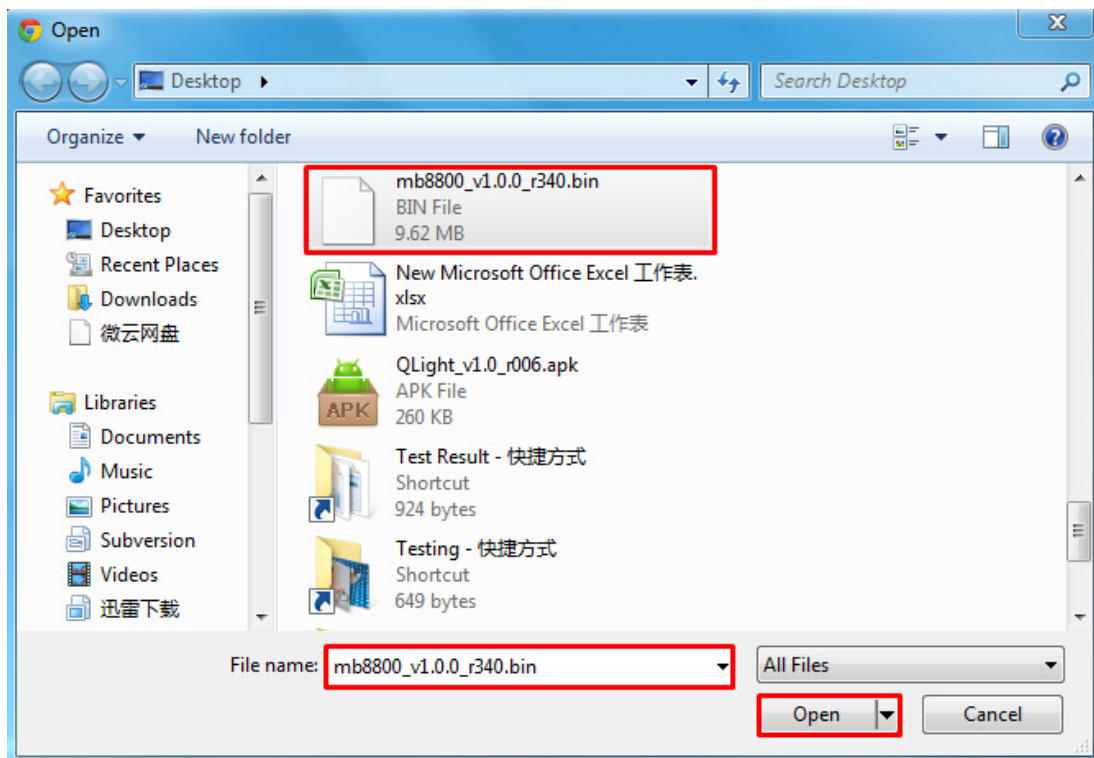
Figure 2-26 **Upgrade Firmware** screenFigure 2-27 **Select the firmware file in PC**

Figure 2-28 You can see the selected firmware file on page.

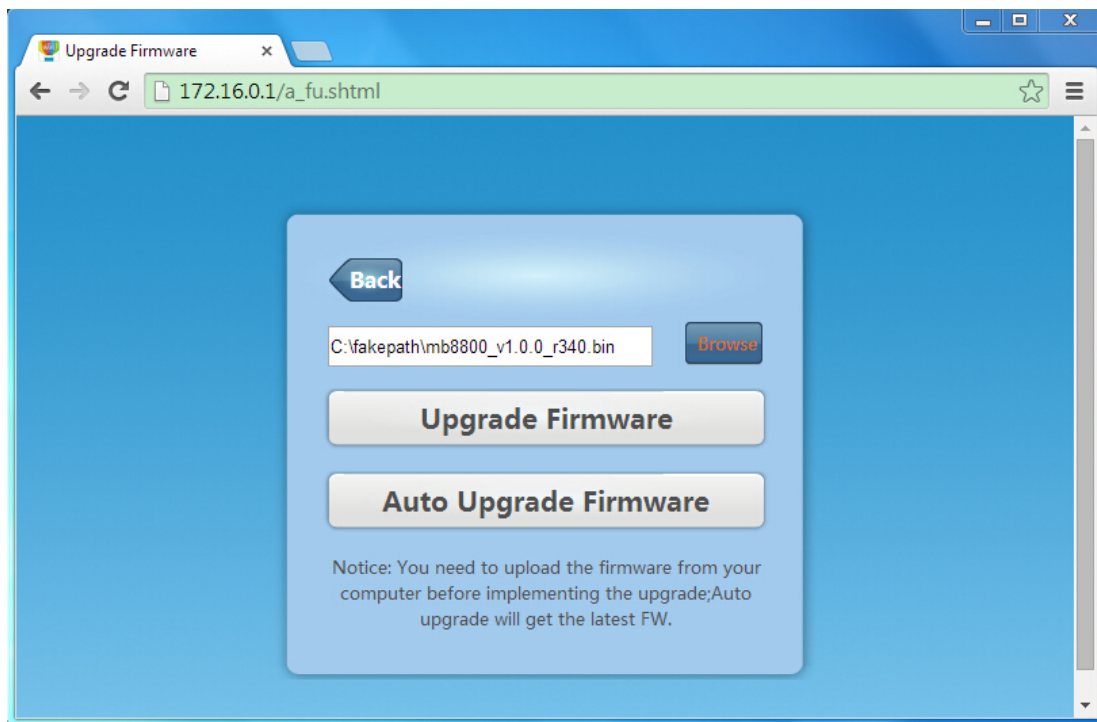


Figure 2-29 Click "Upgrade Firmware", it will pop-up a window.

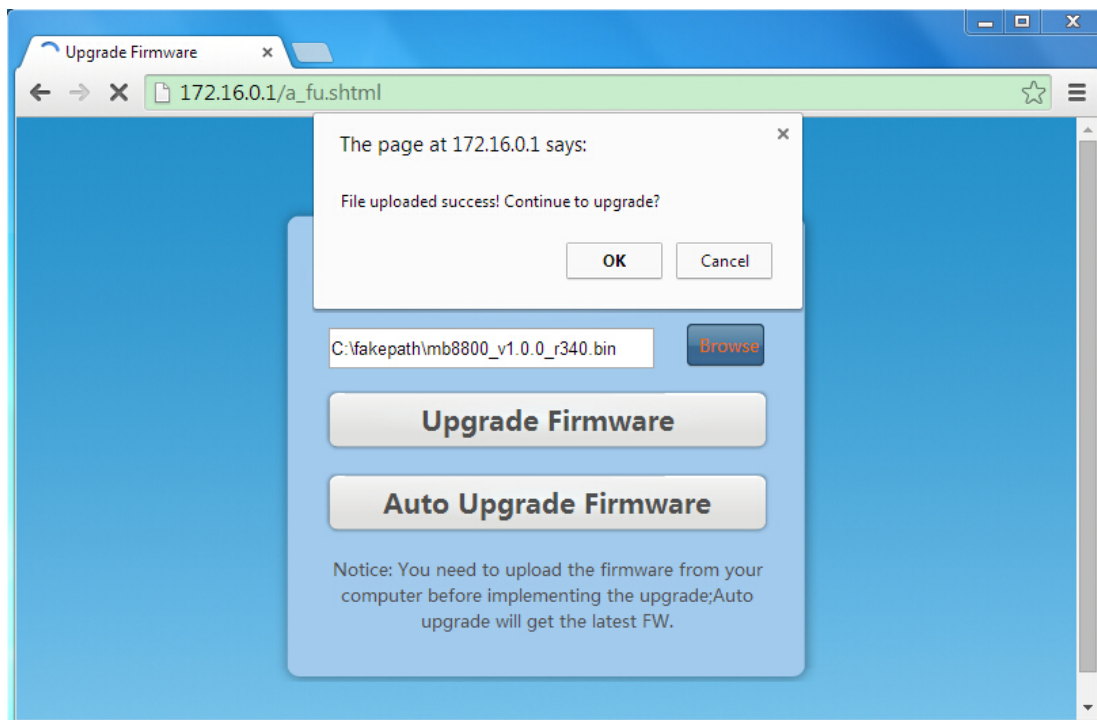


Figure 2-30 **Click OK, upgrade will proceed.**

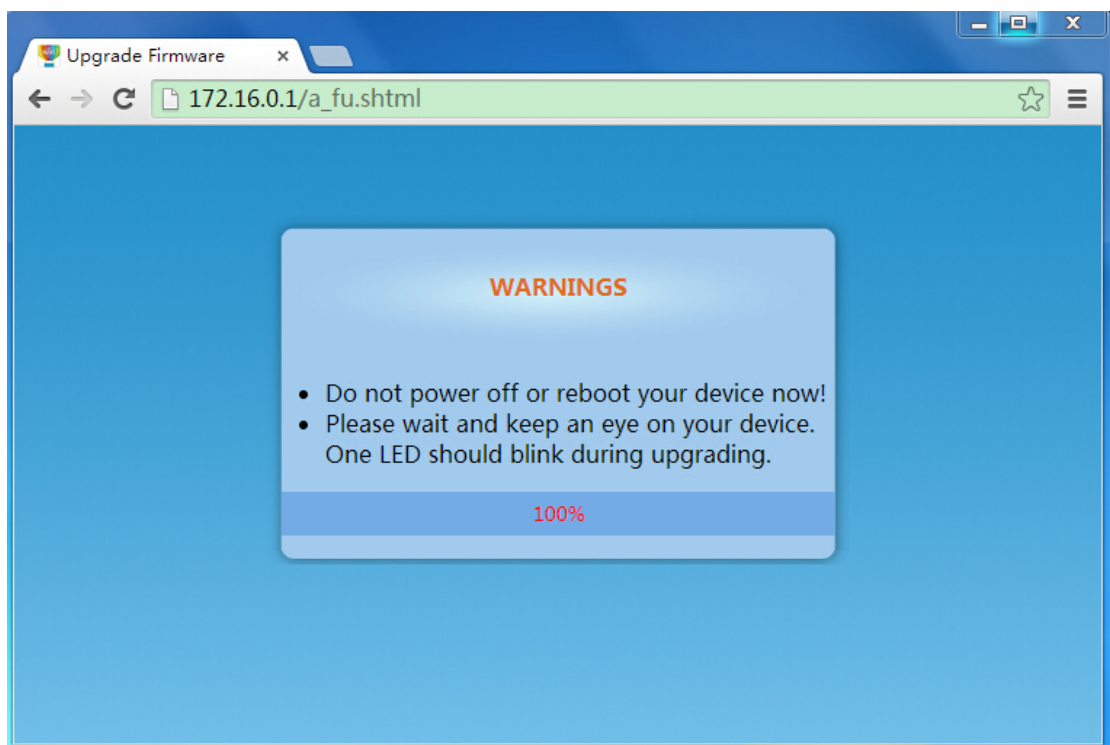
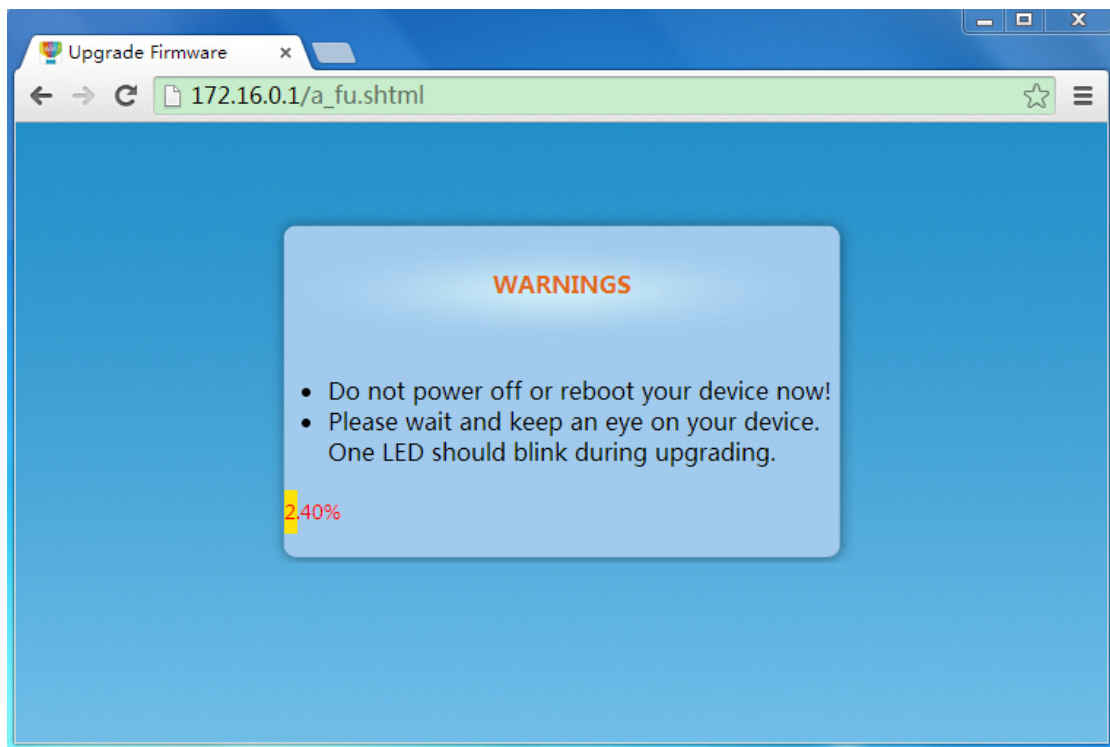
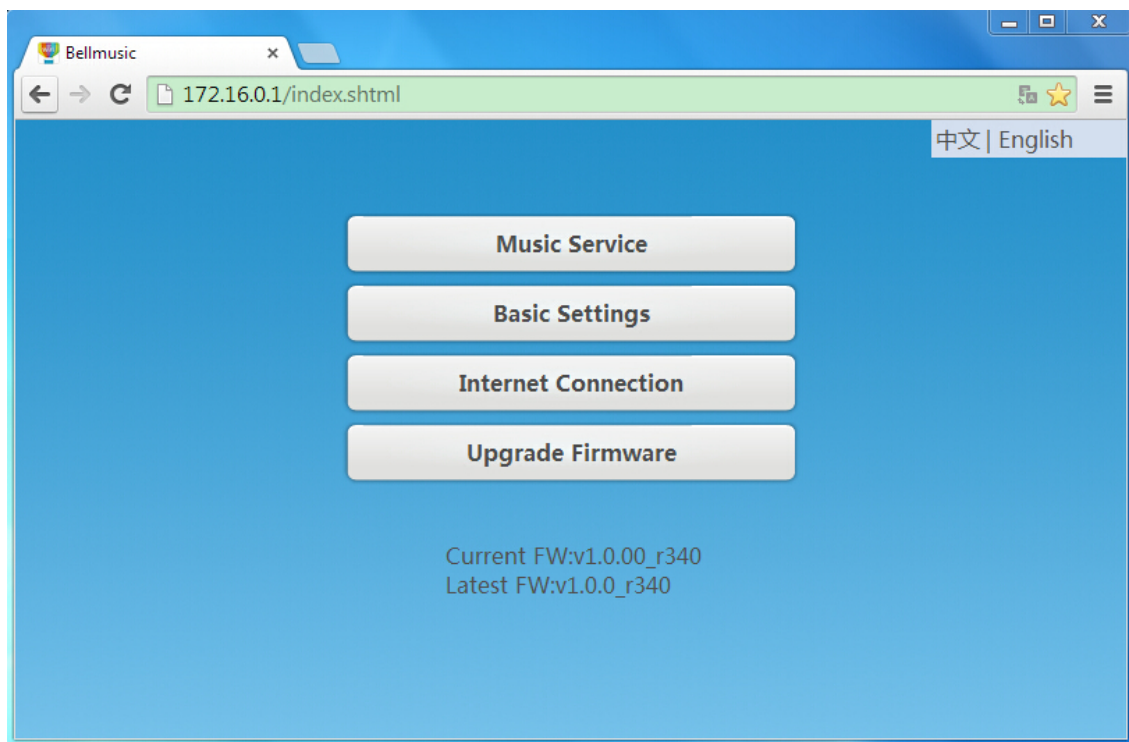


Figure 2-31 **When process is 100%, refresh the page. New Firmware has been upgraded.**



To auto upgrade, please follow below steps:

1. In Upgrade Firmware screen (Figure 2-26), Click Auto Upgrade Firmware.

You will see at the bottom of screen, there's a circle blinking. (Figure 2-32)

2. Then it will pop-up a window: File uploaded success! Continue to upgrade?
(Figure 2-33).

3. **Click “OK”**, to proceed the upgrading. (Figure 2-34).

If you want to quit the upgrading, click “取消”(Cancel).

4. When the process is 100%, **refresh** the page. (Figure 2-35)

The new firmware has been upgraded successfully.

Notice:

If you use “Auto Upgrade Firmware” in mobile, when the process is 100%, you need to connect your mobile Wi-Fi to Q Station again. Then go to <http://172.16.0.1>, you will see the Firmware has been upgraded.

Figure 2-32 **Firmware is upgrading.**

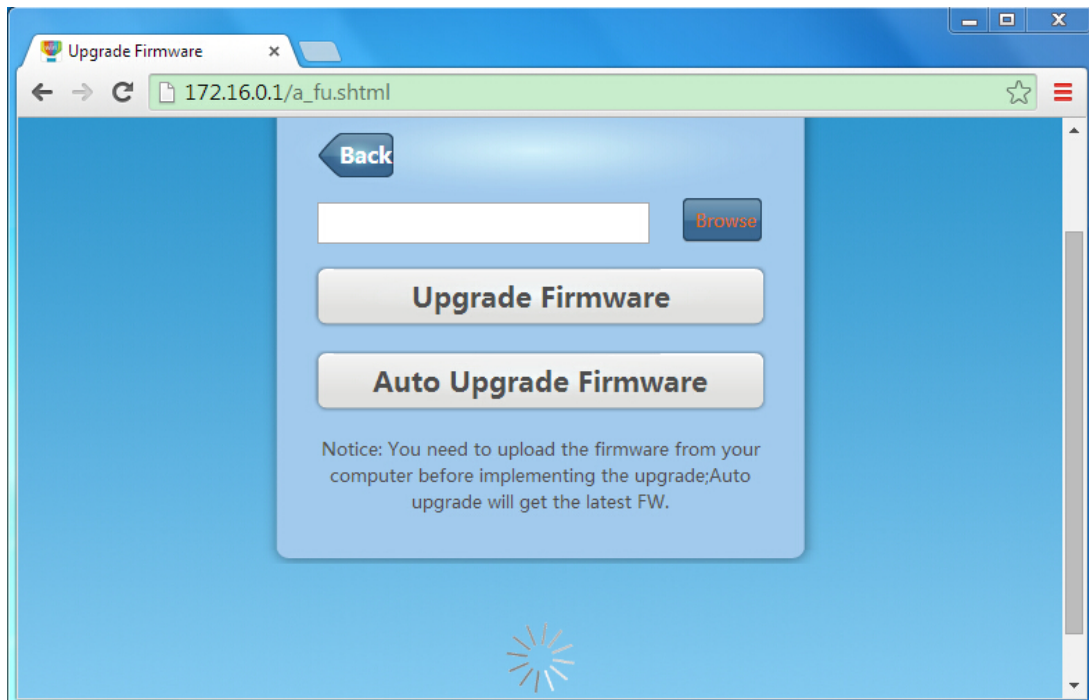


Figure 2-33 **On the page, pop-up a window**

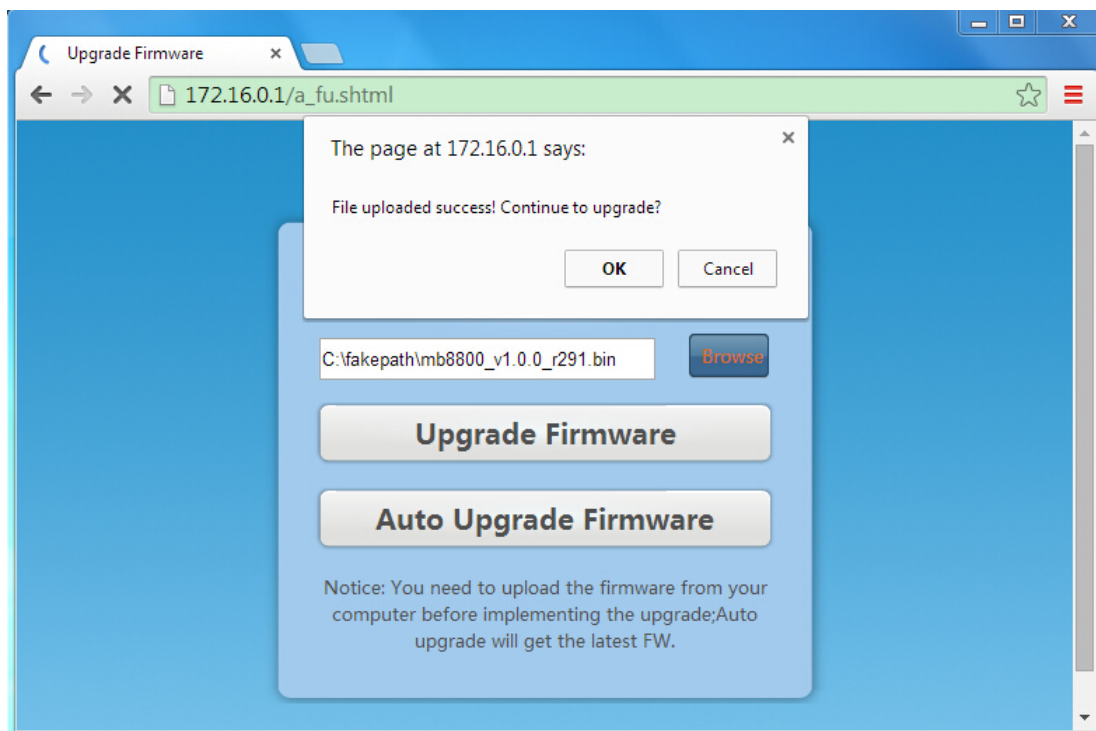


Figure 2-34 **Click OK, upgrade will proceed.**

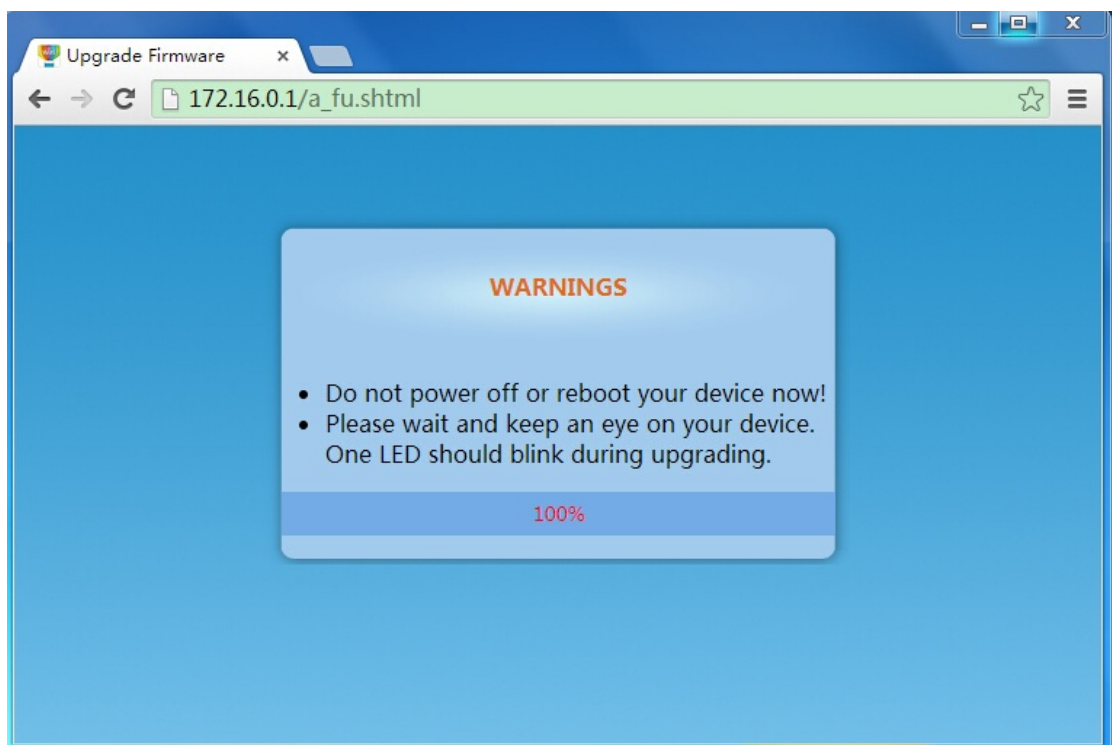
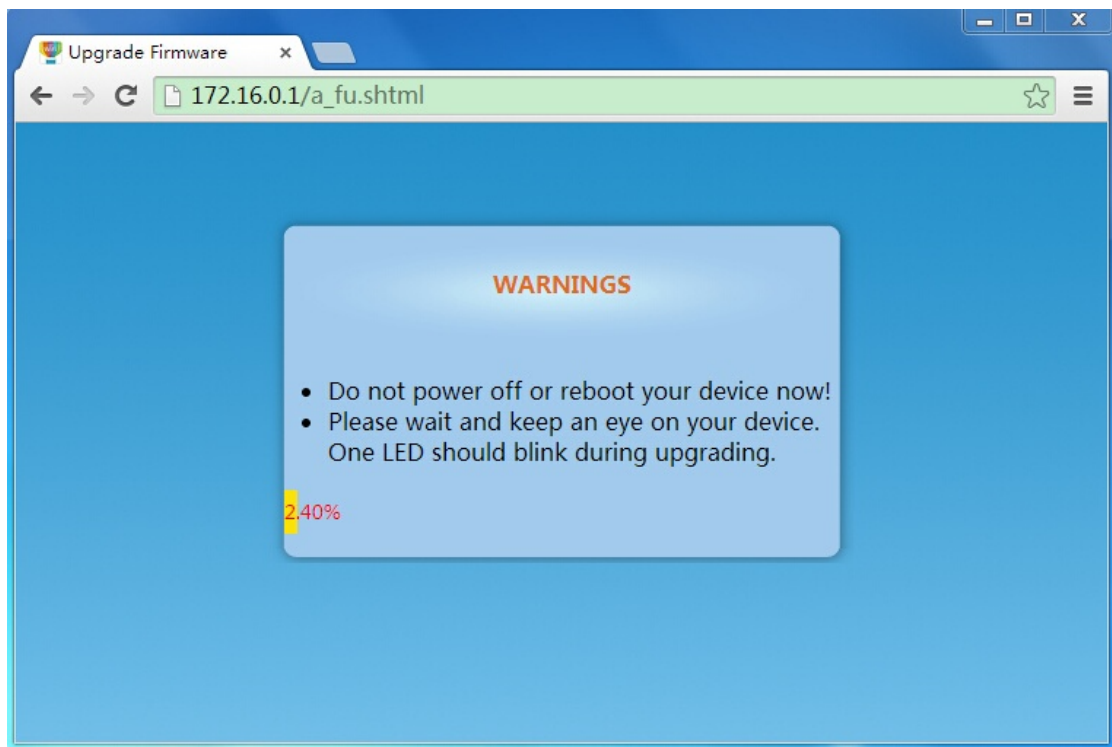
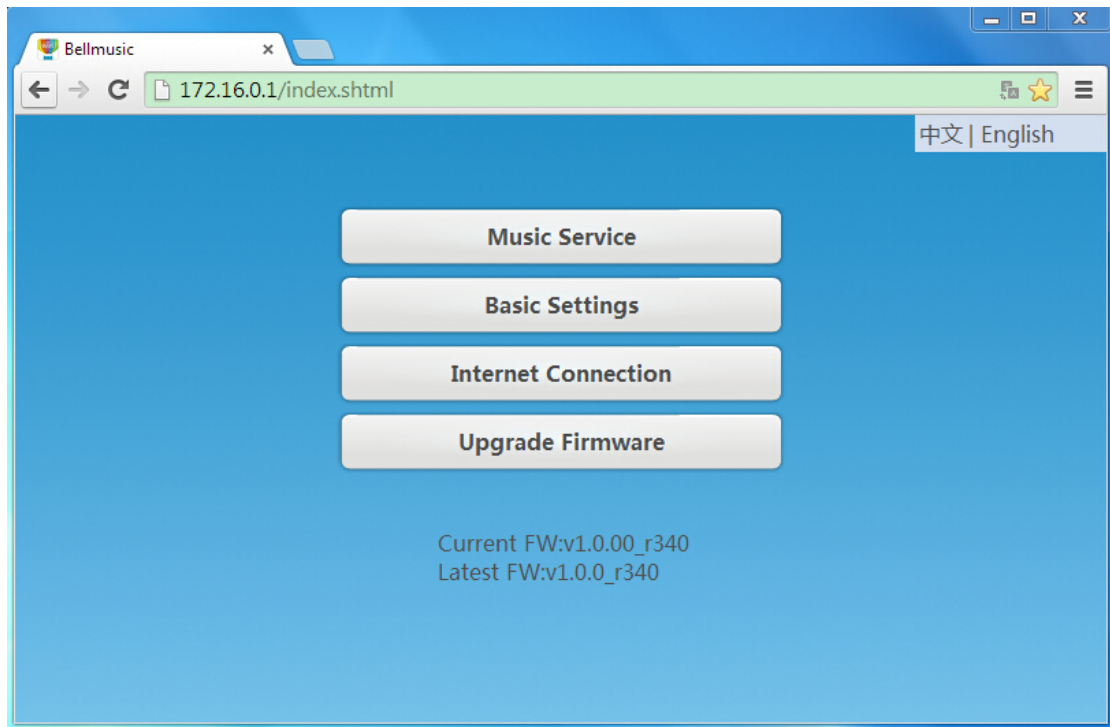


Figure 2-35 When process is 100%, refresh the page. New Firmware has been upgraded.



3 QLight in Android

In this section, we'll introduce how to use the “QLight” application in mobile.

3.1 Connect your Wi-Fi to Q Station

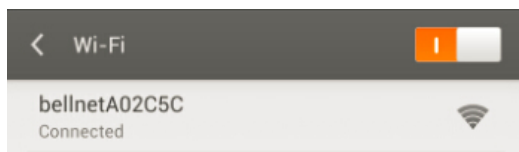
Change your Wi-Fi connection to “bellnetXXXXXX”, you will connect to Q Station.

(Figure 3-1)

Notice:

By default, Q Station SSID is “**bellnetXXXXXX**”. No Encryption.
(XXXXXX is the last 6 digit of your MAC)

Figure 3-1 Change your Wi-Fi connection to “bellnetXXXXXX”



3.2 Install QLight

Software:

1. Search the APP “QLight” in Google Play.
2. Download and run it.

3.3 Light Control

Run QLight, first you will see QLight light control page. (Figure 3-2)

Figure 3-2 **QLight light control page**
(Color mode)

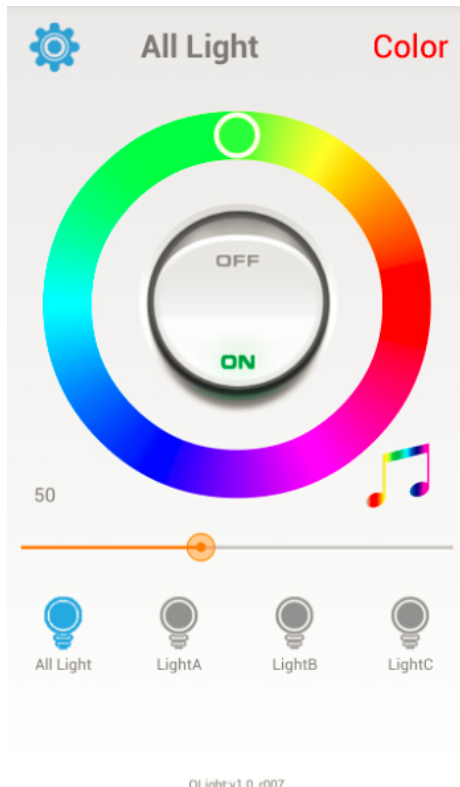
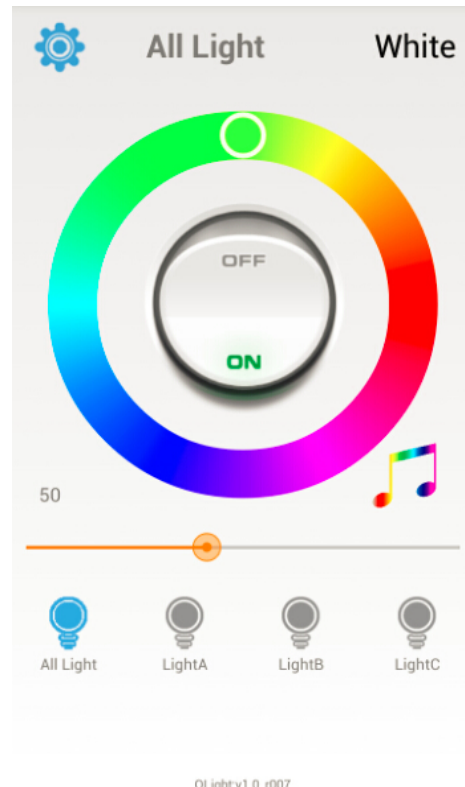

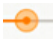





Figure 3-3 **On top right, Click “Color”,**
Q Bulb color will change to “White” (White mode)




- **Click “ALL Light”:** all your light control operation will control all three Q Bulbs.
- **Light Control:**
 1. Click ON or OFF to turn on or turn off the Q Bulbs.
 2. Slide the little circle  to adjust the color of light.
 3. Move the intensity bar  to adjust the brightness.
 4. **Click “Color”** on the top right, then Q Bulbs will change to white color. At the same time, you **cannot** adjust the color of light now. (Figure 3-3)
 5. If you **click “White”**, then the Q Bulb color will change to the color where the little circle stays at. You can adjust the color of light again.
- **Click :** You can control whether the lights blink with music or not.
 -  means the lights will blink with music.
 -  means the lights won't blink with music.

- Click “LIGHT A”/ “LIGHT B”/ “LIGHT C”: You can control the light separately.
(Figure 3-4, 3-5, 3-6)

On the top of the page, you can see **light SN (e.g. MD1ACXXX00000XXX)**.

It is a dynamic subtitle.

- **Light Control: Operation is same as above.**
- Click : You will go to Q Station Configuration Page.

(For the details, please refer to 2.2 Configuration in detail.)

Figure 3-4 **LIGHT A control page**

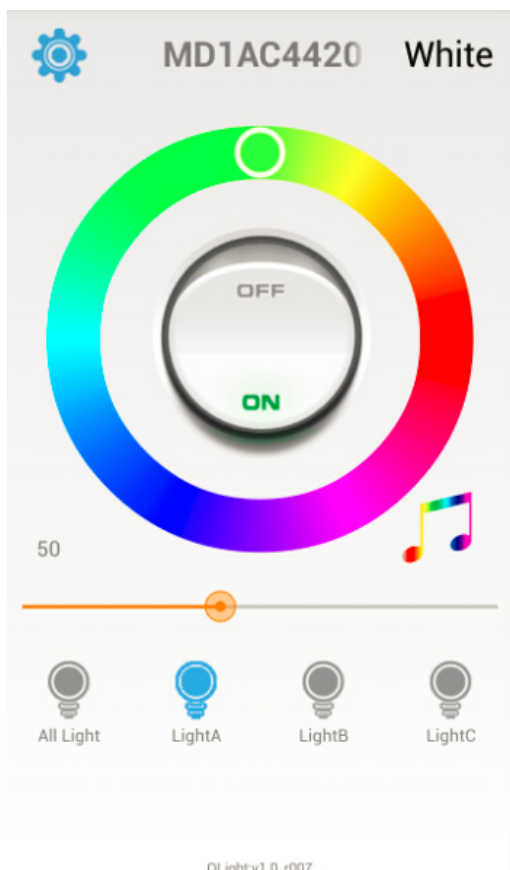


Figure 3-5 **LIGHT B control page**

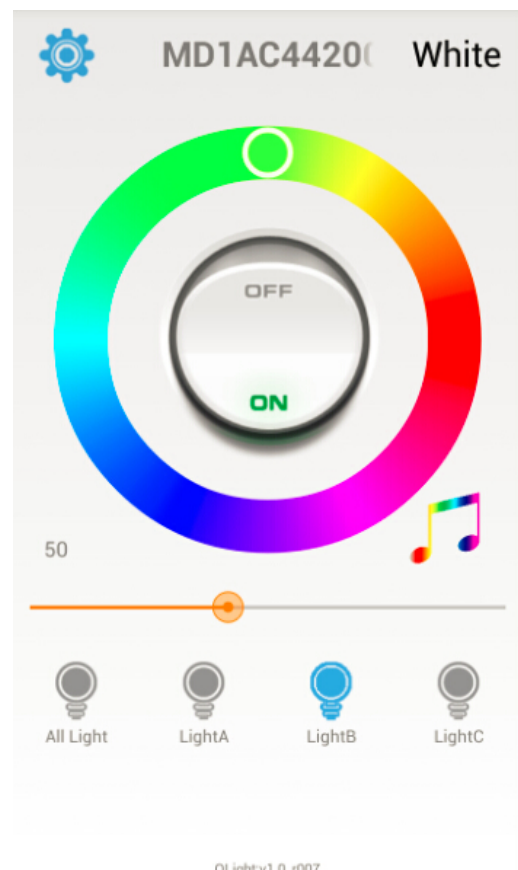
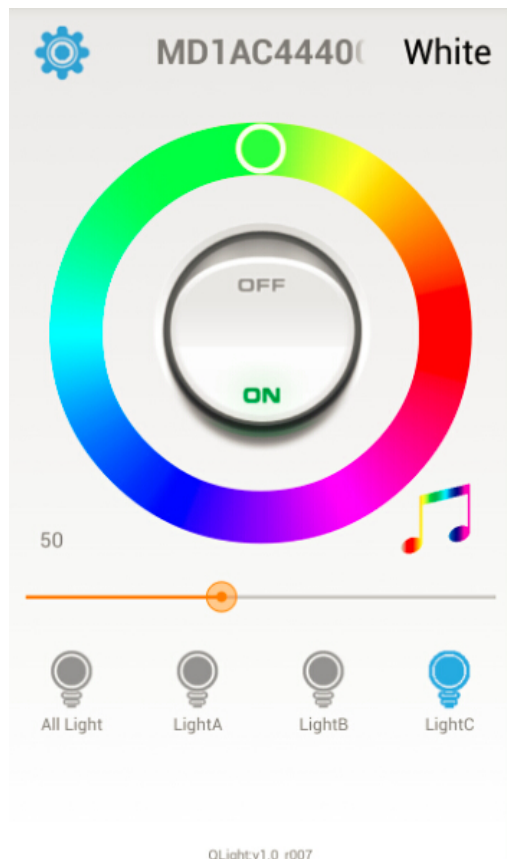


Figure 3-6 **LIGHT C control page**



4 Play Music & Light Show

■ Steps:

1. Install any music APP which supports DLNA protocol (e.g. BubbleUPnP).
2. Run BubbleUpnp. (Figure 4-1)
3. Add one song in PLAYLIST.
4. In RENDERER, choose “**bellmusicXXXXXX**”. (Figure 4-2)
5. Click “Play” button to play music.

Notice:

- By default, Q Station Speaker Name is “**bellmusicXXXXXX**”.
(XXXXXX is the last 6 digit of your MAC)
- DLNA protocol allows you to stream music to the stereo or speaker which is connected to the Q Station. And the Q Bulbs will blink synchronously with your music.

Figure 4-1 Use BubbleUPnP to play music

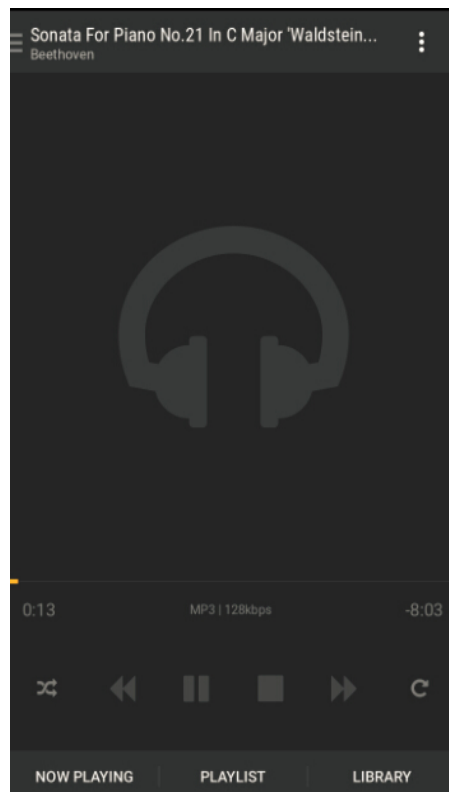


Figure 4-2 Choose “**bellmusicXXXXXX**” as your speaker

